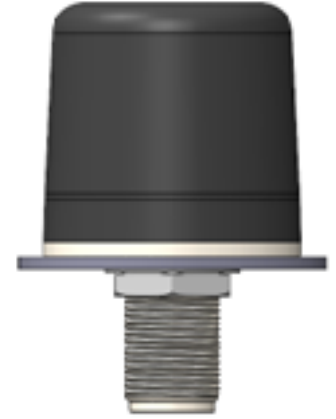


## STI-CO® Wi-Fi Antenna

- Supports 2.4 GHz, 5.0 GHz, and 6.0 GHz Wi-Fi Bands (Wi-Fi 6E)
- Direct (Stud) mount provides superior theft protection
- Meets MIL-STD-810 / AREMA Environmental Standards
- Proudly designed & manufactured in the U.S.A.
- Available in black or white radome colors
- Every STI-CO® antenna is backed by a 5- year warranty



### ELECTRICAL SPECIFICATIONS <sup>1</sup>

MODEL NUMBER	RFPT-SB-WI6E-A (Black) RFPT-SB-WI6E-WT-A (White)	
OPERATING BANDS (GHz)	2.4 - 2.5	5.1 - 7.2
BANDWIDTH (MHz)	100	2100
VSWR (Typical)	≤2:1	≤2:1
AVERAGE EFFICIENCY (%)	85.9	83.5
PEAK GAIN (dBi)	5.4	7.9
POLARIZATION	Vertical	
RADIATION PATTERN	Omnidirectional (Azimuth)	
INPUT IMPEDANCE (Ω)	50	
CONTINUOUS POWER RATING (W) <sup>2</sup>	100	

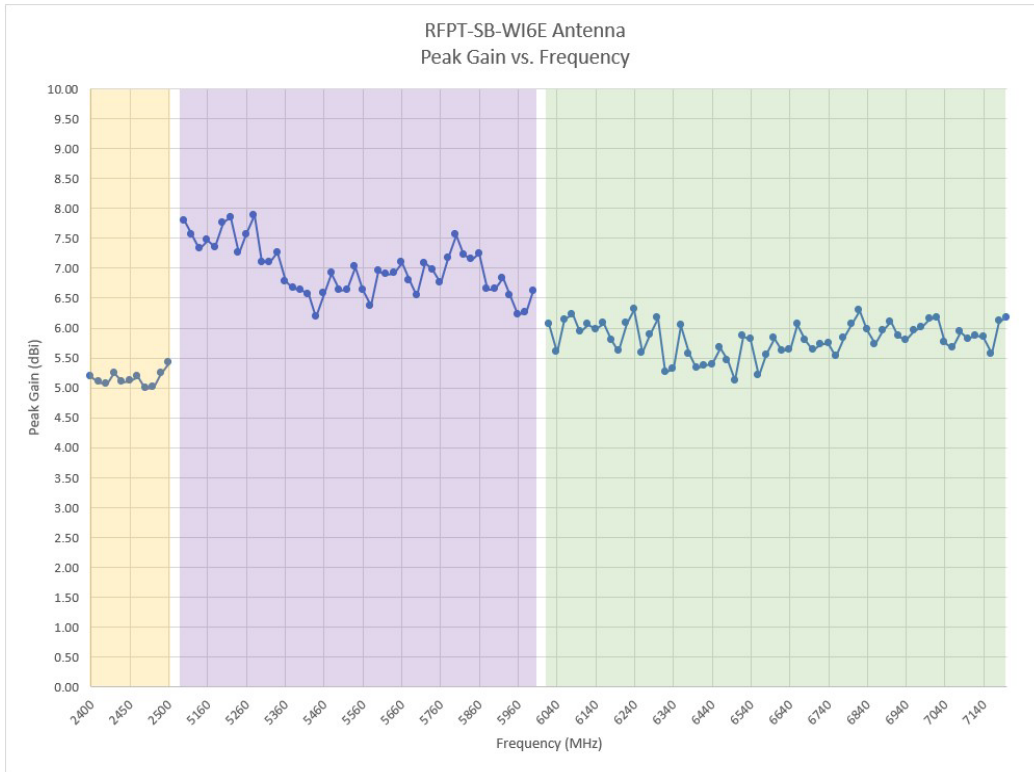
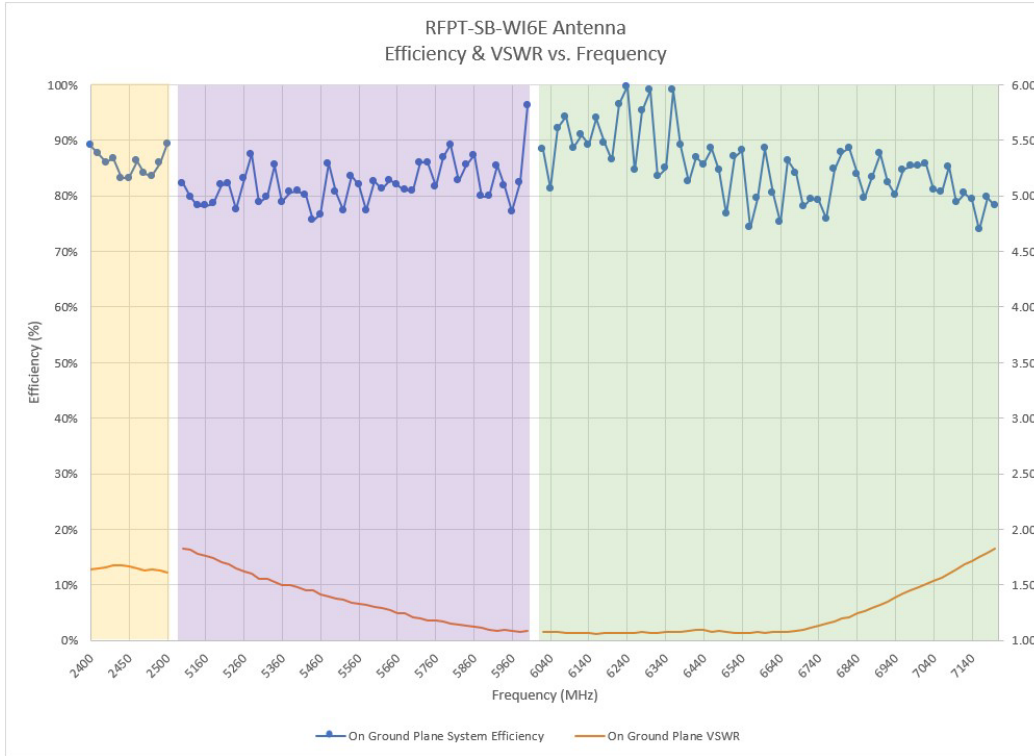
<sup>1</sup> Measured on 16" diameter ground plane with direct connection - no feedline loss included.

<sup>2</sup> 60 seconds applied power duration.

## MECHANICAL SPECIFICATIONS

OVERALL HEIGHT (Inches)	1.67
OVERALL DIAMETER (Inches)	1.67
WEIGHT (Ounces)	5.04
MOUNTING SURFACE THICKNESS (Inches)	.281 (MAX)
RF CONNECTION	N-Type Female
RADOME MATERIAL	UV-Stabilized PC/PBT (Xenoy®)
BASE MATERIAL	360 H02 Brass w/ Tri-Metal Finish
TEMPERATURE RANGE (°F)	-40 to +158

## ELECTRICAL PERFORMANCE



## MECHANICAL DRAWING

